

# SIMOTION SimoTrans

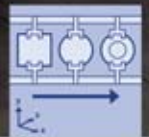
Solution for electronic transfer control  
in presses

Automating your transfer systems is now even easier and more cost-effective. Our SIMOTION SimoTrans application meets all requirements for the transport or transfer of workpieces within a press.

#### Benefits:

- **Maximum flexibility:**  
Due to scalable products, systems and solutions.
- **Open parameterization of motion control and time-optimized sequences of motion** result in shorter production downtimes.
- **Scaled performance of the drive and operator components.**
- **Designed with standard components:** SIMOTION, SINAMICS, SIMATIC HMI and distributed I/O.
- **Open application-based solution:**  
Can be individually adapted by the OEM.

# metal forming SOLUTIONS



Would you like to considerably reduce your engineering overhead required for transfer systems by using a functional solution and tested know-how? Then we have the perfect solution for you. And best of all:

The SIMOTION SimoTrans application can be used as a stand-alone application or in combination with the SIMOTION SimoPress

and SIMOTION SimoRoll applications, which can generate additional synergy effects for the entire press line.

No matter which package you select, with SIMOTION SimoTrans you benefit from a considerably shorter "time-to-market" and much more efficiency.

**SIEMENS**

# SIMOTION SimoTrans

## The key to more productivity

### Overview

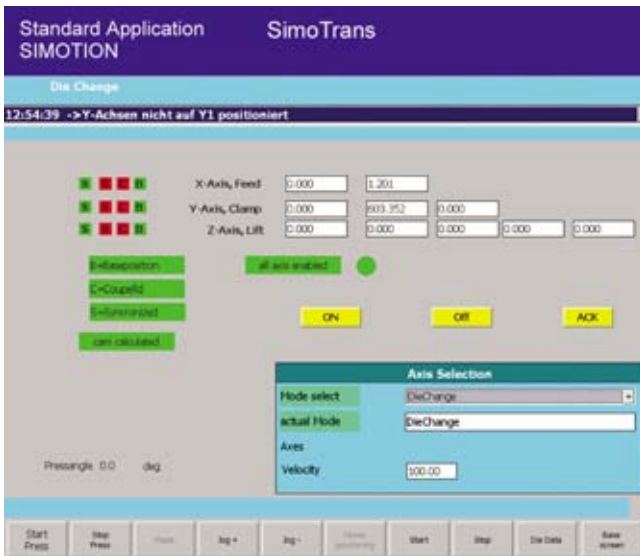
The electronic transfer requires considerably less mechanical driving elements. They are almost entirely replaced by electrical positioning drives that operate synchronously with the main motion of the press.

The **SIMOTION SimoTrans** application meets all requirements regarding machine and workpiece-friendly motion control.

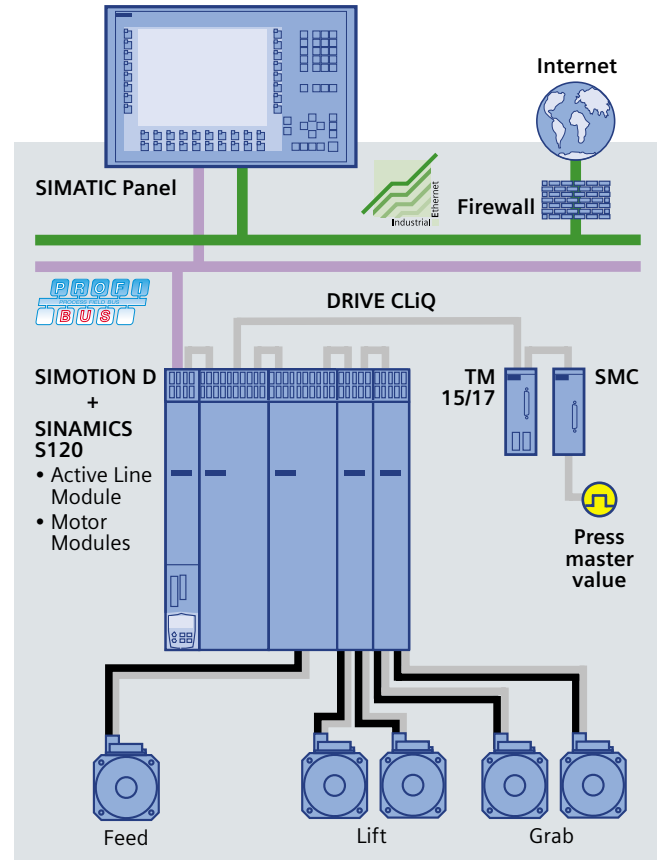
Particularly interesting in the case of electronic transfer: on-the-fly switchover of master values. It ensures that adjustments to mechanical conditions are implemented smoothly.

**SIMOTION SimoTrans** can be used as a stand-alone application or in combination with the **SIMOTION SimoPress** and **SIMOTION SimoRoll** applications, which can generate additional synergy effects for the entire press line.

It doesn't matter under which conditions or whether the compact, PC-based, or drive-related version SIMOTION SimoTrans is to be used. SIMOTION SimoTrans can be used on any platform.



Example of HMI screen



Example of automatic electronic transfer

### SIMOTION SimoTrans highlights

- Linking of the motion system to a higher-level master value.
- Traversing using standardized higher-level equations of motion (5th degree polynomial) and thus improved jerk and shock conditions.
- Maximum positioning accuracy due to synchronized axes.
- Modular, parameterizable program structure supports press variations.
- On-the-fly switchover of master values to adapt to the mechanical conditions.
- Plausibility check for Motion profile data entry.
- Tool data management
- Calculation of the maximum stroke rate, including acceleration/speed optimization for long traverse paths.
- Additional functions such as a master value filter or collision monitoring can be implemented.
- Precise adaptation to the tool room due to tabular parameterization, alternatively link-up with CAD by means of OPC.
- Visualization of motional sequences through simple entry in tables.
- Open application-based solution, can be individually adapted by the OEM.
- Redundant master value encoder is possible.

[www.siemens.com/metalfforming](http://www.siemens.com/metalfforming)